



Science, technology  
and innovation



**CSIC**

CONSEJO SUPERIOR DE INVESTIGACIONES CIENTÍFICAS



UNIVERSITAT  
POLITÀCNICA  
DE VALÈNCIA

# About us



Founded in November 1999, INGENIO has conducted twenty years of research on the complex relationships between science, technology, innovation and society. INGENIO aims to undertake high quality and socially relevant research that advances knowledge and contributes to addressing societal challenges. To achieve these dual objectives, INGENIO is organised as a multidisciplinary research centre that recognises and fosters the advantages of collaborative knowledge production to address complex scientific and socio-economic problems. For this reason, INGENIO actively seeks to engage and work with a diverse range of academic, industry and civil society partners.

INGENIO (CSIC-UPV) is a joint research centre of the Spanish National Research Council (CSIC) and the *Universitat Politècnica de València* (UPV).

INGENIO is committed to continuing its engagement in local, regional, national and international activities to foster:

- Collaborative research and networking
- Creation of inclusive spaces for dialogue and opportunities for collective research and innovation activities
- Quality research training and support for Masters and Doctoral students
- Cultivation of cultures of responsibility and sustainability in research and innovation

# Our research

## POLICY DESIGN

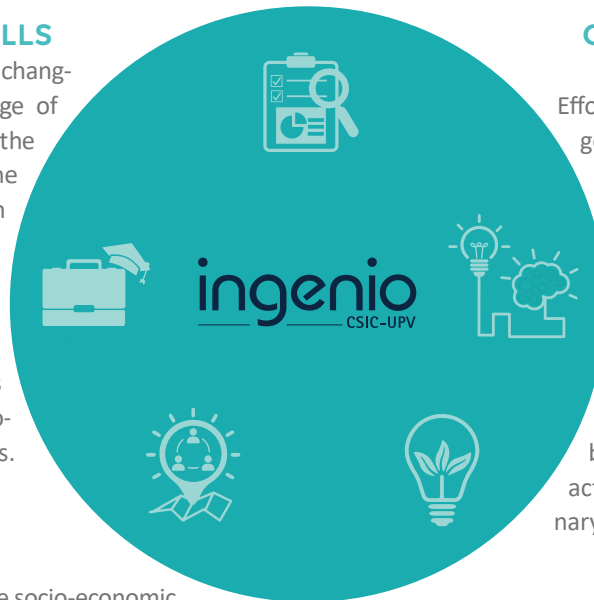
Research and innovation policies face serious challenges regarding the new ways of generating and applying knowledge, the incorporation of diverse actors and stakeholders into research and innovation activities, and the need to align scientific activities and outcomes with societal needs. INGENIO contributes to the development of new concepts and analytical approaches to the design, implementation and assessment of research and innovation policies.

## EDUCATION, EMPLOYMENT & SKILLS

Technology and globalisation are profoundly changing the world of employment. A wide range of opportunities and challenges are shaping the way work is organised, job quality, and the demand for knowledge and skills, with often profound effects on income distribution and inequality. Transformations in companies, education and training systems, public policy design, and modes of participation of citizens are constantly required. INGENIO analyses the determinants, processes and socio-economic consequences of these transformations.

## TERRITORIAL INNOVATION & ORGANISATIONAL CAPACITIES

Knowledge intensive industries and innovative socio-economic activities tend to cluster in cities, creative hubs and high-tech zones. This can generate territorial disparities and the need for local and regional strategies to generate learning opportunities, link to existing hubs and value chains, and build on local strengths and opportunities. INGENIO contributes to the debate on the challenges for peripheral areas in Europe, and to addressing the need for coordinated and appropriate knowledge and innovation strategies at local and regional levels.



## COLLABORATION & KNOWLEDGE CO-CREATION

Efforts to co-produce knowledge that can generate beneficial societal impacts depend on sustained interactions and varying modes of cooperation, bringing together different types of actors pursuing diverse objectives. INGENIO studies the growing relevance of cooperative and inclusive practices in research and innovation, the co-creation of knowledge with a particular emphasis on collaborative relationships between academic and non-academic actors, and the importance of transdisciplinary research approaches.

## SOCIAL AND ENVIRONMENTAL INNOVATION FOR SUSTAINABILITY

Global challenges demand the orientation of research and innovation processes beyond their purely technological or economic dimensions. INGENIO aims to advance processes of social innovation, responsible research and innovation, and the development of sustainable socio-economic models that promote more inclusive societies.

# Our capabilities

Independence and constructive engagement are at the heart of everything we do. We engage through informal interactions, specific project-based activities, and enduring partnerships and collaborative relationships.

## NEW RESEARCH

We undertake exploratory investigation and discovery-driven programmes and projects in our main research areas. These are built on the topics of specialisation and diverse disciplinary expertise of our core researchers. We also seek to advance existing knowledge in these areas, particularly to broaden the scope of their potential application and societal impact.

## MULTI-PARTNER RESEARCH COLLABORATION

Focused on specific research challenges, our collaborations involve partners from academia, industry, government and society. Collaborations range from small locally oriented projects to large European *Framework Programme* consortia.

## CIVIC RESEARCH PARTNERSHIPS

We partner with civil society organisations to work on research approaches and social innovation projects over a number of years. These are informal and formal partnerships that are designed to meet the needs of specific partner organisations or populations.

## CONSULTING

Usually formal arrangements with a relatively short time-frame and a specific output required, such as a programme or project evaluation, a review or report, or the provision of policy advice.

## TRAINING

We host international research students from all corners of the world in a well-resourced, inclusive and collegial environment. We participate in and provide access to European networks of researcher mobility, training and career development.